

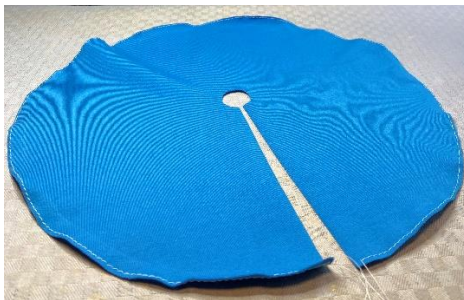
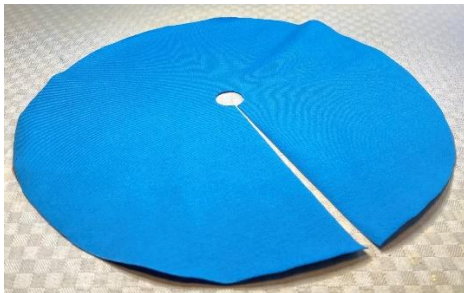
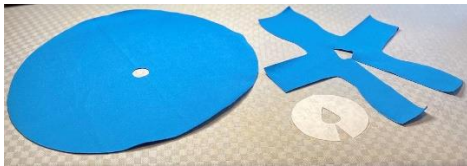
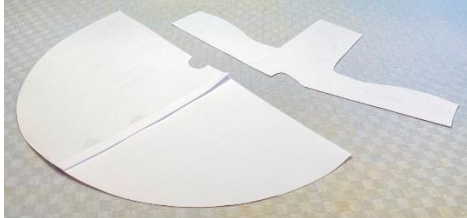
Tutorial for Mermaid Dress (53 "Summer – 11.5 inch Fashion Dolls") www.meretesyr.se

Choose a stretchy fabric that does not fray, for example cotton jersey.

You also need a piece of 6 mm (1/4 inch) wide Velcro or small sew on snaps and a piece of iron-on interfacing.

Licence

You are **not allowed to copy the pattern** and share with others. You are allowed to sell the finished products that you sew yourself.
www.meretesyr.se



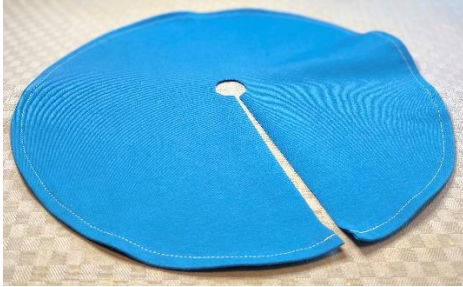
1. You need these pattern pieces. They come in two sizes, choose the one that fits your doll.
2. When you have cut the fabric, the pieces should look like this. The smallest piece is cut from iron-on interfacing.

Skirt part:

3. Cut the skirt at the mid rear part (the longest part) along the grain line.
4. Now we hem the skirt part. One way is to sew a row of basting stitches a couple of millimeters from the edge. I use a straight stitch with 1/8 inch (3.5 mm) length for this. The purpose is to make it easier to get a smooth hem without "bumps".
5. Pull on the upper threads (one in the start and one in the end of the seam) and distribute the gathering evenly.

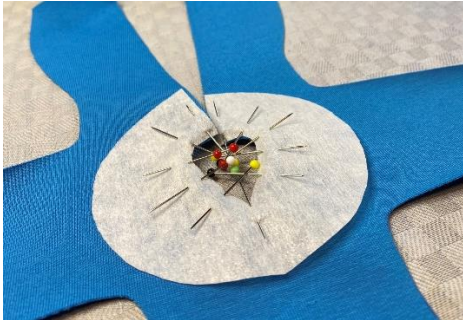


6. Fold a 3/8 inch (10 mm) wide hem. Attach with pins.



7. Sew with a straight stitch 1/4 inch (7 mm) from the edge. Use a matching thread colour (I use a different colour so that it will show better on the photos). Pull out the basting threads if you want, it's also ok to leave them. Press.

Top part:



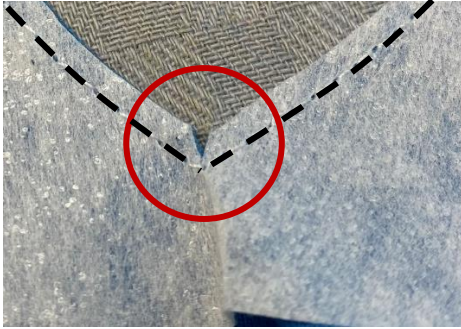
8. Put the non-shiny side of the iron-on interfacing towards the right side of the top part. Pin.



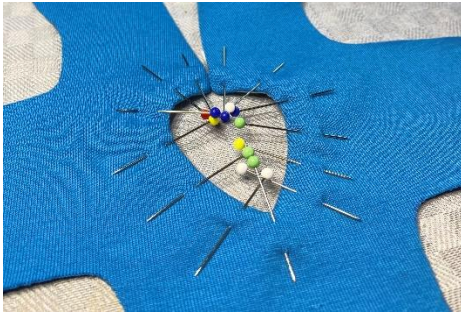
9. Sew with a straight stitch 1/4 inch (7 mm) from the edge.



10. Cut away some of the seam allowance so that only a couple of millimeters remain.



11. Make a small cut in the front, see picture.



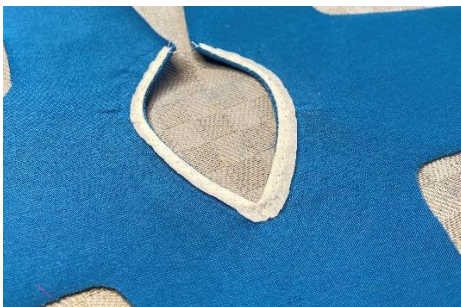
12. Turn the garment right side out. Pin. (Do NOT iron.)



13. Sew with a straight stitch close to the edge.



14. This is what the wrong side looks like now.



15. Cut away some of the seam allowance so that only a couple of millimeters remain. Press.



16. Fold the $\frac{1}{4}$ inch (7 mm) hem for the sleeves. Attach with glue pen. Press.



17. Sew close to the edge with an elastic stitch, for example a reinforced straight stitch. Press.



18. Cut away some of the seam allowance so that only a couple of millimeters remain.



19. Fold the garment, right side in, and attach arm/side with glue pen and/or pins.



20. Sew with an elastic seam, for example a reinforced straight stitch. The seam allowance is $\frac{1}{4}$ inch (7 mm).



21. Cut away some of the seam allowance so that only a couple of millimeters remain.



22. Pry the seam allowances apart and attach them with the glue pen. Press.



23. Mark double the hem $\frac{1}{2}$ inch (14 mm) in the back.



24. Fold the $\frac{1}{4}$ inch (7 mm) hem. Attach with glue pen. Press. Do the same for the other side.



25. Turn the garment right side out.



26. . Cut a piece of the $\frac{1}{4}$ inch (6 mm) wide velcro and attach with glue pen as shown in the picture. It's also possible to use a regular (wider and thicker) piece of velcro that you cut to the correct size.



27. Sew around the velcro as close to the edge as possible.

Attach the top part and the skirt part:



28. Place pins in the mid part of the two pieces.



29. Place the two parts right sides together and attach with pins. **The skirt part should stick out ¼ inch (7 mm) on each side.**



30. Put more pins.



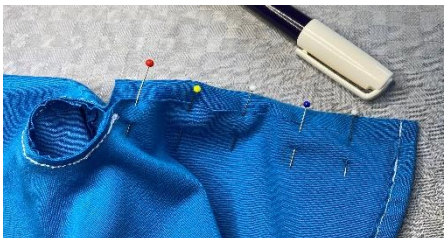
31. Sew with an elastic stitch. **NB: Do NOT sew over the folded hem on one of the sides (see which one in the picture).**



32. Cut away some of the seam allowance so that only a couple of millimeters remain.



33. Place the velcro pieces on top of each other (so they connect).



34. Turn the skirt part wrong side out and attach with pins. Attach with glue pen at the hem.



35. Close-up. The straight parts of the fabric will not be placed edge-to-edge. This doesn't matter. The important thing is that it matches where it connects to the top part.



36. Sew.



37. Cut away some of the seam allowance so that only a couple of millimeters remain.

38. Finished!

