

## Tutorial for Bathing Suit (53 "Summer – 11.5 inch Fashion Dolls") [www.meretesyr.se](http://www.meretesyr.se)

Choose a stretchy fabric that does not fray, for example cotton jersey. You also need a small piece of 3/16 inch (5 mm) wide elastic.

I recommend (fabric) glue pen instead of pins for this tiny garment.

### Licence

You are **not allowed to copy the pattern** and share with others. You are allowed to sell the finished products that you sew yourself.

[www.meretesyr.se](http://www.meretesyr.se)



1. You need this pattern piece. It comes in two sizes, choose the one that fits your doll.



2. When you have cut the fabric, the piece should look like this.



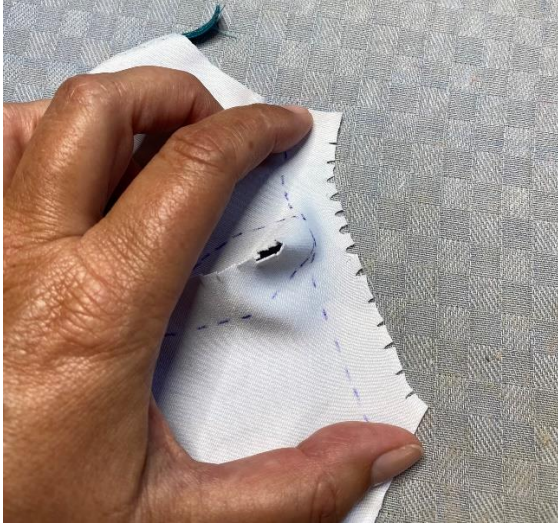
3. Place a 3/16 inch (5 mm) wide elastic edge-to-edge with the upper and lower edges. Attach with a glue pen (a special glue pen for sewing that does not hurt the sewing machine. The glue dries quickly and becomes almost invisible, and it washes away.)



4. Sew with an elastic stitch. In the picture a 1/8 inch (3 mm) wide and 1/8 inch (3 mm) high 3 step zigzag sewn in the middle of the elastic is shown.



5. Barbie is very small, so precision is needed to get panties that fit well. One way to do this is to mark double the hem (1/2 inch) on the wrong side of the fabric. Do this for the curved parts.



6. Make a lot of approximately 3 millimeter (1/8 inch) long cuts, see picture.



7. Fold the hem with all the cuts so that the edge is exactly on the markings. Attach with glue pen. Press.



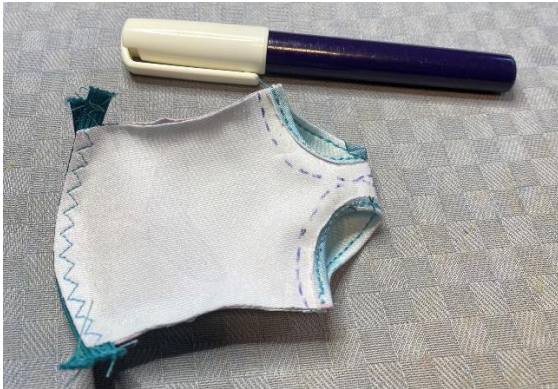
8. Sew with an elastic stitch close to the edge.



9. This is how it looks on the wrong side.



10. . Cut away some of the seam allowance so that only a couple of millimeters remain.



11. Fold with right side in. Attach the sides with glue pen.



12. Sew with an elastic stitch.



13. Cut away some of the seam allowance so that only a couple of millimeters remain.

14. Turn right side out. Finished!

