

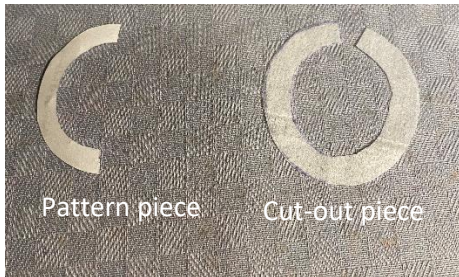
Tutorial for Tank Top ("Basic Favourites – 12 inch male fashion dolls") www.meretesyr.se

Choose a stretchy fabric that does not fray, for example cotton jersey.

You also need 6 mm (1/4 inch) wide velcro (or small sew on snaps) and a small piece of iron-on interfacing.

Licence

You are **not allowed to copy the pattern** and share with others. You are allowed to sell the finished products that you sew yourself.
www.meretesyr.se



1. You need this pattern piece called "Tank top". It comes in three sizes, choose the one that fits your doll.
2. When you have cut the fabric, the piece should look like this.
3. To make it easier to sew the neck line it is recommended to also cut a piece of iron-on interfacing. Pattern piece is on the left, cut-out part to the right.
4. Attach heat transfer vinyl (htv) if you like.
5. Mark double the hem (1/2 inch, 14 mm) on the wrong side of the fabric. Start by marking the two long curved sides as shown in the picture.



6. Make a lot of approximately 1/8 inch (3 mm) long cuts, see picture.



7. Fold the hem with all the cuts so that the edge is exactly on the markings. Attach with glue pen. Press.
(This is a special glue pen for sewing that does not hurt the sewing machine. The glue dries quickly and becomes almost invisible, and it washes away.)



Close-up.



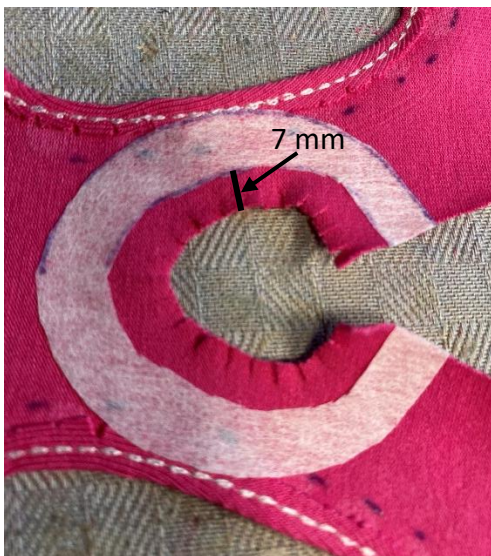
8. Sew close to the edge. Use a matching thread colour (I use a different colour so that it will show well on the photos).



This is how it looks on the wrong side.



9. Cut away some of the seam allowance so that only a couple of millimeters remain.



10. Iron on the interfacing to the wrong side of the fabric. There should be approximately $\frac{1}{4}$ inch (7 mm) from the edge of the fabric to the interfacing (see picture).
Make a lot of approximately $\frac{1}{8}$ inch (3 mm) long cuts, see picture.



11. Fold the hem with all the cuts around the inner part of the interfacing. Attach with glue pen. Press.



12. Sew close to the edge all around the neck line.
(There is interfacing here, so this seam does not have to be elastic, a regular straight stitch is fine.)
Some sewing machines may have difficulties sewing this part, there is a separate tutorial "Tips and advice when sewing for fashion dolls" with a couple of tricks to make it work. Another alternative is to sew this particular seam by hand.



13. Cut away some of the seam allowance so that only a couple of millimeters remain.



14. Fold the garment, right sides in, and attach sides with glue pen.



15. Sew with an elastic seam, for example a reinforced straight stitch. The seam allowance is $\frac{1}{4}$ inch (7 mm).



16. Cut away some of the seam allowance so that only a couple of millimeters remain.



17. Pry the seam allowances apart and attach them with glue pen. Press.



18. Fold the $\frac{1}{4}$ inch (7 mm) hem. Attach with glue pen. Press. Sew close to the edge with an elastic stitch, for example a reinforced straight stitch. Press. Cut away some seam allowance so that only a couple of millimeters remain.



Now it should look like this.

If you are using sew on snaps:

19. Cut $\frac{1}{2}$ inch (14 mm) wide strips of iron-on interfacing. Press them onto the wrong side of the fabric. Then fold it so that the hem is $\frac{1}{4}$ inch (7 mm). Sew. Attach the sew on snaps.

NB: Skip this point if you are using velcro.



If you are using velcro:

20. Fold the $\frac{1}{4}$ inch (7 mm) hems on both sides. Attach with glue pen. Press. (You don't need interfacing.)



21. Cut a piece of the $\frac{1}{4}$ inch (6 mm) wide velcro and attach with glue pen as shown in the picture. It's also possible to use a regular (wider and thicker) piece of velcro that you cut to the correct size



22. Sew around the velcro as close to the edge as possible.

23. Finished!



Original Ken



Broad Ken