

Tutorial for T-shirt ("Basic Favourites – 12 inch male fashion dolls") www.meretesyr.se

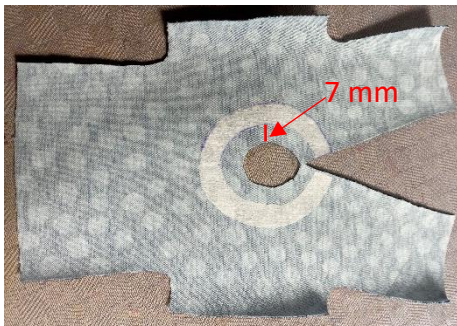
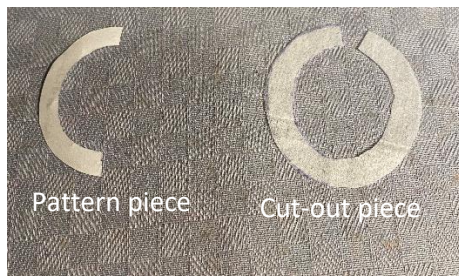
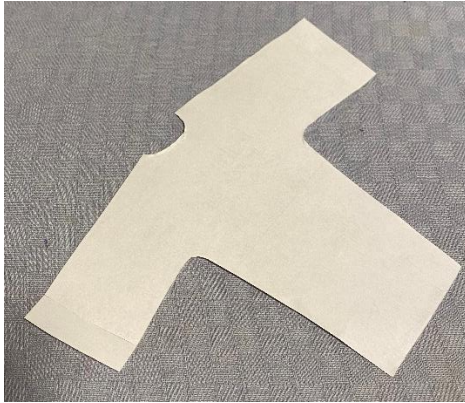
Choose a stretchy fabric that does not fray, for example cotton jersey.

You also need $\frac{1}{4}$ inch (6 mm) wide velcro (or small sew on snaps) and a small piece of iron-on interfacing.

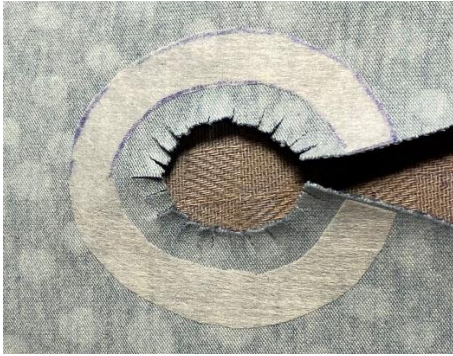
Licence

You are **not allowed to copy the pattern** and share with others. You are allowed to sell the finished products that you sew yourself.

www.meretesyr.se



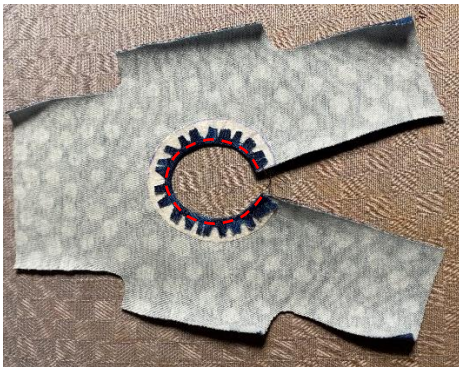
1. You need this pattern piece called "T-shirt". It comes in three sizes, choose the one that fits your doll. You can also choose between long and short sleeve.
2. When you have cut the fabric, the piece should look like this.
3. To make it easier to sew the neckline it is recommended to also cut a piece of iron-on interfacing. Pattern piece is on the left, cut-out part to the right.
4. Iron on the interfacing to the wrong side of the fabric. There should be approximately 7 mm ($\frac{1}{4}$ inch) from the edge of the fabric to the interfacing (see picture).



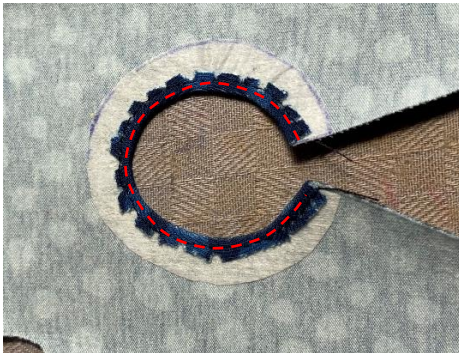
5. Make a lot of approximately 3 millimeter (1/8 inch) long cuts, see picture.



6. Fold the hem with all the cuts around the inner part of the interfacing. Attach with glue pen. Press.
(This is a special glue pen for sewing that does not hurt the sewing machine. The glue dries quickly and becomes almost invisible, and it washes away.)
You can use pins instead of a glue pen, but it is easier to use the glue pen.



7. Sew close to the edge all around the neckline.
(There is interfacing here, so this seam does not have to be elastic, a regular straight stitch is fine.)
Some sewing machines may have difficulties sewing this part, there is a separate tutorial "Tips and advice when sewing for fashion dolls" with a couple of tricks to make it work. Another alternative is to sew this particular seam by hand.



8. Cut away some of the seam allowance so that only a couple of millimeters remain.



9. Fold the 7 mm (approx 1/4 inch) hem for the sleeves. Attach with glue pen. Press. Sew close to the edge with an elastic stitch, for example a reinforced straight stitch. Press. Use a matching thread colour (I use a different colour so that it will show well on the photos).



10. Cut away some of the seam allowance so that only a couple of millimeters remain.



11. Fold the garment, right side in, and attach arm/side with glue pen.



12. Sew with an elastic seam, for example a reinforced straight stitch. The seam allowance is 7 mm (approx 1/4 inch).



13. Cut away some of the seam allowance so that only a couple of millimeters remain.



14. Pry the seam allowances apart and attach them with the glue pen. Press.



15. Fold the 7 mm (approx 1/4 inch) hem. Attach with glue pen. Press. Sew close to the edge with an elastic stitch, for example a reinforced straight stitch. Press. Cut away some of the seam allowance so that only a couple of millimeters remain.



If you are using sew on snaps:

16. Cut 14 mm (1/2 inch) wide strips of iron-on interfacing. Press them onto the wrong side of the fabric as shown in the photo. Then fold the interfacing so that the hem is 7 mm (1/4 inch). Sew. Attach the sew on snaps.

NB: Skip this point if you are using velcro.



If you are using velcro:

17. Fold the 7 mm (approx 1/4 inch) hems on both sides. Attach with glue pen. Press. (You don't need interfacing.)



18. Cut a piece of the 6 mm (1/4 inch) wide velcro and attach with glue pen as shown in the picture. It's also possible to use a regular (wider and thicker) piece of velcro that you cut to the correct size.



19. Sew around the velcro as close to the edge as possible.



20. Finished!



Slim Ken



Original Ken



Broad Ken