

Tutorial for Trousers and Shorts ("Basic Favourites – 12 inch male fashion dolls") www.meretesyr.se

Choose a stretchy fabric that does not fray, for example cotton jersey.

You also need 6 mm (1/4 inch) wide velcro (or small sew on snaps) and a small piece of iron-on interfacing.

Licence

You are **not allowed to copy the pattern** and share with others. You are allowed to sell the finished products that you sew yourself.
www.meretesyr.se



1. You need this pattern piece called Trousers. It comes in different sizes, choose the one that fits your doll. You can also choose between three different leg lengths, depending on if you want to make shorts, long shorts or full length trousers. Here the full length trousers are shown, but the others are made the same way.
2. When you have cut the fabric, the pieces should look like this.
3. To get really good precision you can mark double the hem (1/2 inch) on the wrong side of the fabric on top and bottom of the trousers
4. If you want a decorative seam on the side of the trousers, sew it now. Start by marking the seam on the right side of the fabric.



5. Sew the decorative seam using an elastic seam, for example reinforced straight stitch. Press.



6. Fold the $\frac{1}{4}$ inch (7 mm) hem for the trouser leg. Attach with glue pen. Press.
(This is a special glue pen for sewing that does not hurt the sewing machine. The glue dries quickly and becomes almost invisible, and it washes away.)
You can use pins instead of a glue pen, but it is easier to use the glue pen.



7. Sew close to the edge with an elastic stitch, for example a reinforced straight stitch. Press.
Use a matching thread colour. (I use a different colour so that it will show well on the photos).



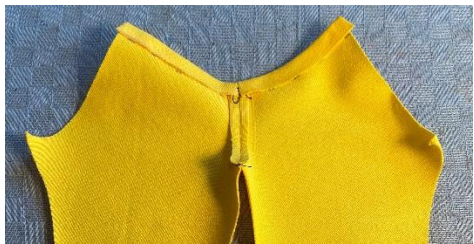
8. Cut away some of the seam allowance so that only a couple of millimeters remain.



9. Place the parts on top of each other, right sides in. Attach the front crotch (the shortest curved parts) with a glue pen.
Sew with an elastic seam, for example a reinforced straight stitch. The seam allowance is $\frac{1}{4}$ inch (7 mm).



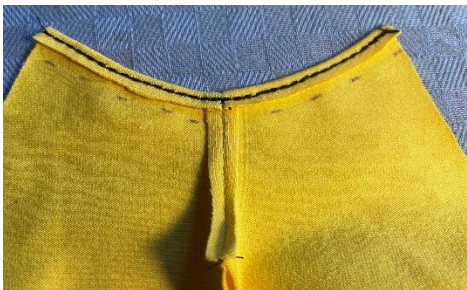
10. Cut away some of the seam allowance so that only a couple of millimeters remain.



11. Fold the $\frac{1}{4}$ inch (7 mm) upper hem. Attach with glue pen. Press.



12. Sew close to the edge with an elastic stitch, for example a reinforced straight stitch. Press.



13. Cut away some of the seam allowance so that only a couple of millimeters remain OR sew another seam a couple of millimeters below the first one (see picture 15).



14. If you want to make more decorative stitches, it should be done now. The seams have to be elastic, for example a reinforced straight stitch. Start by sewing a decorative stitch on top of the front crotch seam.



15. Sew according to the picture (fake fly, pockets and waistband).



Now it's time to make the opening in the back (if you don't want an opening, skip to point 26):

16. Fold the garment, right side in. Attach the rear crotch (the longer curved parts) with a glue pen. Sew with an elastic seam, for example a reinforced straight stitch. The seam allowance is $\frac{1}{4}$ inch (7 mm). NB: Do not sew all the way, leave an opening at the top according to the marking on the pattern.



17. Cut away some of the seam allowance so that only a couple of millimeters remain. NB: do NOT cut away anything at the top near the opening (see pic).



18. Turn the garment right side out. Cut a $\frac{1}{2}$ inch (15 mm) piece of the $\frac{1}{4}$ inch (6 mm) wide velcro strip. Or use a small snap that is sewn on by hand.



19. Attach one piece of the velcro on the (unfolded) seam allowance using the glue pen.
If you are using a sew on snap instead, press on a small piece of iron-on interfacing on the wrong side on the fabric.



20. Fold the other seam allowance and attach with glue pen.



21. Attach the other part of the velcro here.



22. This is what it should look like now.



23. Sew the velcro in place. This is possible to do with the sewing machine, but it can be quite difficult. An alternative is to sew this by hand



24. This is what it should look like with the velcro closed.



25. Turn the garment wrong side out. Pry the seam allowance for the rear crotch seam apart and attach with glue pen.
Go to point 29.

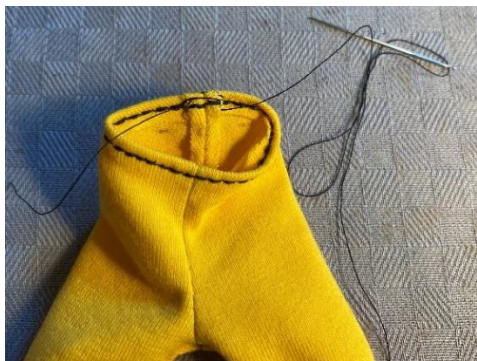


If you don't want an opening in the back (works best for older children who can dress the doll even if it's a tight fit):

26. Fold the garment, right side in. Attach the rear crotch (the longer curved parts) with a glue pen. Sew with an elastic seam, for example a reinforced straight stitch. The seam allowance is $\frac{1}{4}$ inch (7 mm).



27. Pry the seam allowances apart and attach them with the glue pen. Press.



28. If you want the rear seam to lay flat, sew it down by hand.



29. Fold the garment, right sides in, and attach the legs with a glue pen. Sew with an elastic seam, for example a reinforced straight stitch. The seam allowance is $\frac{1}{4}$ inch (7 mm).



30. Cut away some of the seam allowance so that only a couple of millimeters remain.



31. Turn the garment right side out. Finished!



Slim Ken, Original Ken and Broad Ken in jeans.



Slim Ken and Original Ken in swim trunks made of elastic swimwear fabric. Broad Ken in shorts made of cotton jersey.