

Tutorial for Ball Gown ("Party Clothes – 11.5 inch fashion dolls")

www.meretesyr.se

Use a stretchy fabric that does not fray, for example cotton jersey.

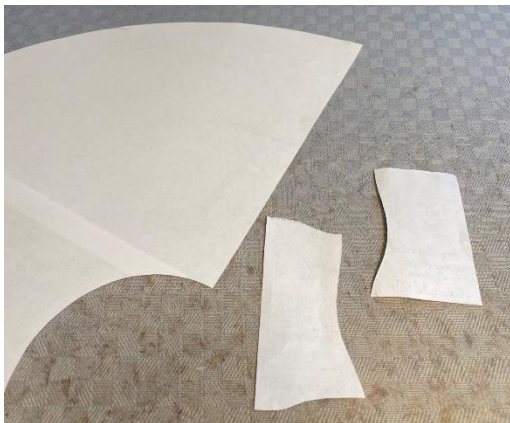
You also need a piece of 6 mm (1/4 inch) Velcro or small sew on snaps.

(The skirt part **can** be made of woven fabric, but that is not described here. If you do, all edges should be zigzagged. It is also good to save the hemming of the skirt to last and to start sewing the back of the dress from the upper part downwards. That way you can even out any unevenness before you hem. The top part **has** to be made of stretchy fabric. **The tutorial is made for stretchy fabric.**)

Licence

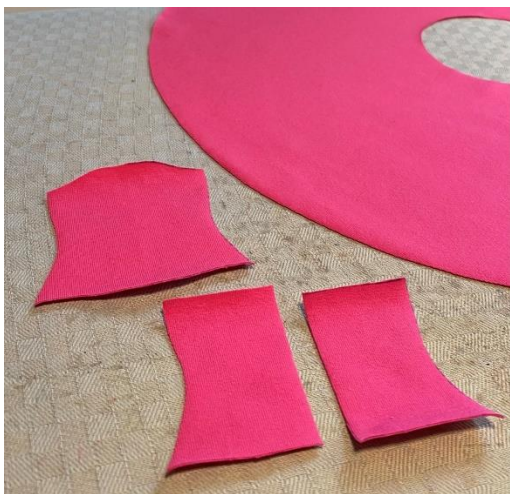
You are **not allowed to copy the pattern** and share with others. You are allowed to sell the finished products that you sew yourself.

www.meretesyr.se



1. Use the pattern pieces marked "Ball Gown". The small pattern pieces come in two sizes, choose the one that fits your doll. There are two options, long and short.

In this tutorial the long dress is shown, the short dress is made the same way.



2. When you have cut the fabric, the pieces should look like this.



3. Place the small pieces right sides together and attach the sides with a glue pen.
(This is a special glue pen for sewing that does not hurt the sewing machine. The glue dries quickly and becomes almost invisible, and it washes away.)
You can use pins instead of a glue pen, but it is easier to use the glue pen.



4. Sew with an elastic stitch, for example a reinforced straight stitch.
Use a matching thread colour (I use a different colour so that it will show well on the photos).



5. Cut away some of the seam allowance so that only a couple of millimeters remain.



6. Pry apart the sewing allowance and attach with glue pen.



7. Now it's time to hem the upper part. It can be hard to tell upper and lower sides apart, the upper part is the shortest. If you are having doubts, compare with the pattern pieces. Mark the double hem width (14 mm, ½ inch).



8. Fold the hem (7 mm, ¼ inch), attach with glue pen.



9. Press.



10. Sew with an elastic stitch 1 mm from the edge.
Press.

Alternative: Some sewing machines have difficulty sewing so close to the edge. In that case you can sew 5 mm (3/16 in) from the edge. If this is also difficult, try putting a piece of paper (e g a coffee filter) underneath when sewing.

Press.



11. This is what the wrong side should look like now.



12. Cut away some of the seam allowance so that only a couple of millimeters remain. Press.



13. Mark the middle point of the raw edge with a pin.

Now we start making the skirt part:



14. Start by marking the double hem width (14 mm, ½ inch) on the lower part of the skirt.



15. Fold the hem (7 mm, ¼ inch), attach with glue pen. Press.



16. Sew with a straight stitch 5 mm (3/16 inch) from the edge. Press.



17. Sew a row of basting stitches (about 3.3 mm long straight stitches) 1 cm (3/8 in) from the edge. A trick is to use a different colour bobbin thread, which makes it easier later when you are going to pull it. (The basting threads are removed afterwards, so their colour is not important.)



18. Sew another one just like it 5 mm (3/16 in) from the edge. The important thing is that the two rows of stitches don't overlap.



19. Mark the middle point of the raw edge with a pin.

Now we will attach the skirt part with the upper part:



20. Place the two parts right sides together so that the pins match. Attach with a pin.



21. Pin 1 cm (3/8 in) from the sides as seen in the picture.



22. Pull both bobbin threads at the same time.



23. Pull until the skirt part length matches the upper part length.



24. Add more pins.



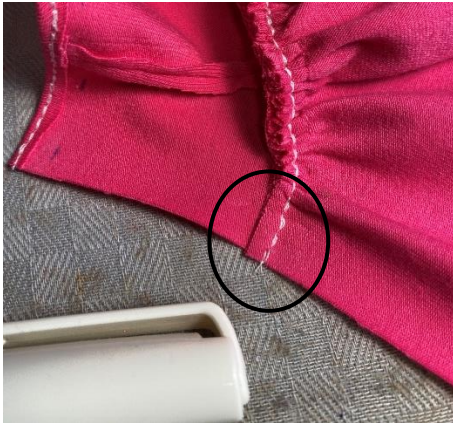
25. Sew with an elastic stitch 7 mm (1/4 inch) from the edge. (Easiest if the upper part is upwards while you sew.)



26. Now it should look like this.



27. Pull out the basting threads (at least the ones you can see from the right side).
Cut away some of the seam allowance so that only a couple of millimeters remain.



28. Fold the sewing allowance (that is close to the edge) upwards and attach with glue pen.



29. Mark the double hem width (14 mm, 1/2 inch) on both remaining raw edges.



30. Fold the hem (7 mm, 1/4 inch), attach with glue pen.



31. Cut an 8 cm (3 in) piece of a 6 mm (1/4 inch) wide piece of velcro and attach with a glue pen as shown in the picture. It's easier to use a piece of velcro that is bought in 6 mm width (it's not only more narrow but also thinner), but you could also cut a piece of wider and thicker velcro to the correct size.



32. Sew around the velcro with a straight stitch as close to the edge as possible.



33. Sew the remaining part of the skirt. Press.

34. Finished!



See more options on next page:



Short ball gown.



Short ball gown with two layers of stiff tulle underneath. The tulle is cut according to the short skirt part and ruched together with the ordinary skirt part. Tulle does not need to be hemmed.



With bolero and clutch bag (see separate tutorials).